

## LCD-35HV Features

Horizontal or Vertical operation

The LCD-35HV is the smallest of the LCD range. Ideal for smaller jobs and vertically mounted hall panels, the LCD-35HV features high definition images with 80 degree viewing angles.

- 480 x 320 pixel TFT screen
- 80 degree viewing angle
- 24 bit true colour depth
- Single PCB design
- Discrete or serial input. ECD Encoder Board required for serial input
- 24VDC positive or negative decimal, binary or Gray code inputs via DIP switch
- 6 floor inputs. Up and down direction inputs
- 63 floors displayed
- USB storage. Reprogram display, simply by changing the USB.
- Programming software available for PC
- Low profile (18mm) available with alternate plugs
- Replace the 100-144a Dot Matrix with the LCD-35HV as stud and screen compatible.

### Specs

Voltage supply	24VDC
Current supply	0.06A
Screen / Pixels	3.5" / 480 x 320
View angle. Horizontal	80° Horiz & Vert
Dimensions	100 x 60 x 30mm

Australian made.

Designed and manufactured by ECD  
in Sydney, Australia



For more information on the range  
of LCD and Dot Matrix indicators  
please visit our website

[www.ecd.com.au](http://www.ecd.com.au)

email: [sales@ecd.com.au](mailto:sales@ecd.com.au)

Ph: 61 2 9316 6909

Fax: 61 2 9316 6797

Factory 11, 30 Perry St  
Matraville NSW 2036  
Australia

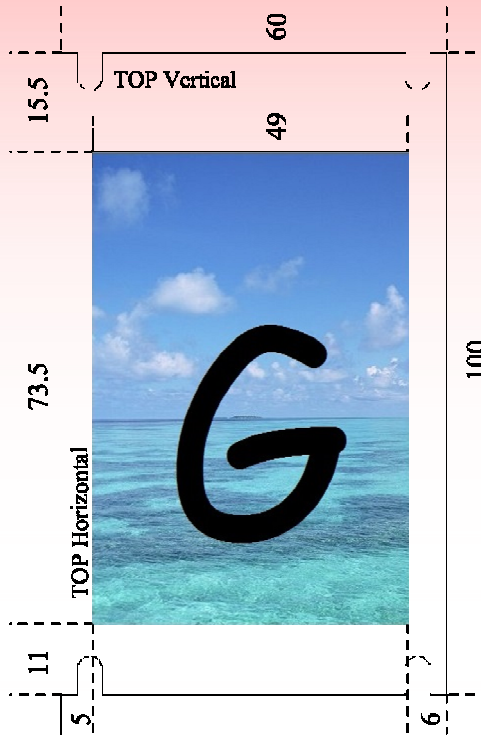
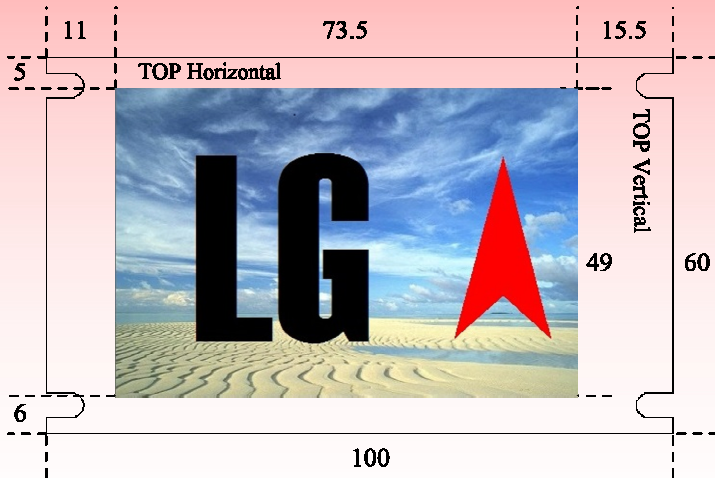
# LCD—35HV

3.5" Colour LCD Elevator  
Horizontal or Vertical Display



Featuring USB programming

Screen dimensions: (mm)



**Input DIP switch:** Select *ONE* switch to “ON”: Dec, Bin, Gray or SP

Dec. “ON” for decimal inputs

Bin. “ON” for binary code inputs

Gray. “ON” for Gray code inputs

SP. “ON” for Serial input

Nb: Binary input switch shown “ON” in diagram below

**Wiring:**

Supply voltage. 24VDC wired to +24V and 0V terminals.

Note: recommended that the supply wires be looped through a ferrite core

**Inputs: 24VDC**

1 to 32 - floor position inputs

Nb: No inputs. “Out of Service” shall be displayed

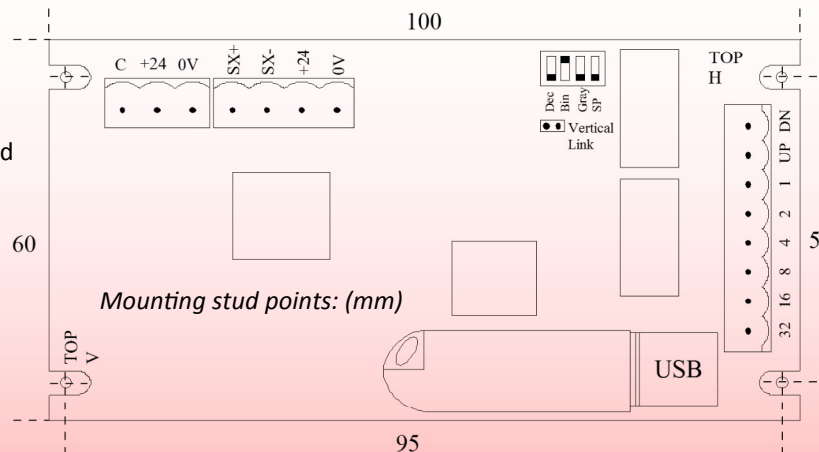
UP, DN - direction of travel inputs

Inputs DN to 32 use C (common) as reference

Eg. If inputs are 24V, C connects to 0V

Place jumper on Vertical Link for vertical display

SX+ and SX- terminals are for the serial input connection from the ECD Encoder board. Refer to the LCD Encoder Board technical article

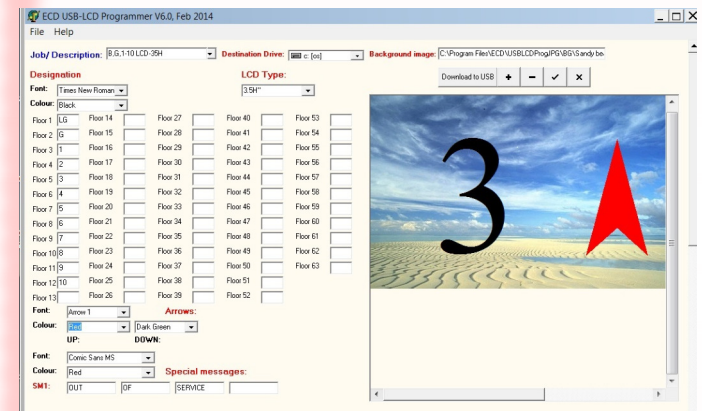


Use the ECD “USB LCD programmer” software to customise the display. Simply download to a USB and insert into the LCD-35HV. Customise the following;

- Background image
- Floor designation
- Direction arrows
- Colours and fonts



**Horizontal**



**Vertical**

